

Toolkit Revision History

16-DEC-2009	MEAutoCADTlktN101.exe	As released version for AutoCAD 2008 with Nexteer Automotive logo and copyright wording in title block areas. Plant number, sheet, number of sheets, and detail boxes above title block have been removed in compliance with current drawing standards. File naming assistance is disabled and is a manual process.
8-MAR-2010	MEAutoCADTlktN101d.exe	Documentation change. Update to this document only to add note for removal of command to load any existing historical Delphi toolkit autolisp script in the acad2008doc.lsp file.
9-APR-2010	MEAutoCADTlktN110.exe	Change made to 14 sheet files to accommodate elimination of SHEET, SHTS, and PLANT attributes in the new Nexteer title block. Although the three tag names are no longer used this allows direct replacement of older Delphi title block.
22-OCT-2010	MEAutoCADTlktN120.exe	Change made to A3 sheet file to correct margin discrepancy.
03-FEB-2012	MEAutoCADTlktN200.exe	Compile Autolisp program SSS_MTK-4.01.lsp using AutoCAD Mechanical 2012 Visual Lisp editor to create new sss_mtk.VLX file for 2012 toolkit.
05-JAN-2015	MEAutoCADTlktN300.exe	Compile Autolisp program SSS_MTK-4.02.lsp using AutoCAD Mechanical 2015 Visual Lisp editor to create new sss_mtk.VLX file for 2015 toolkit. Capture some legacy files from 2012 to allow toolkit to work in 2015 environment. Rebuild Standard English/Metric block slide library.

Instructions for installing the

Manufacturing Engineering Toolkit N3.00 for AutoCAD 2015.

Copyright (C) 2008 Steering Solutions Services (Nexteer Automotive Corp.)

Copyright (C) 2012 Nexteer Automotive Corporation

Copyright (C) 2015 Nexteer Automotive Corporation

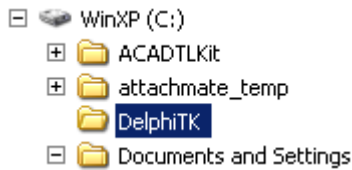
Created by Ted Metcalf
Spud Software, Inc.

Steve Buzzell
Nexteer Automotive Corporation

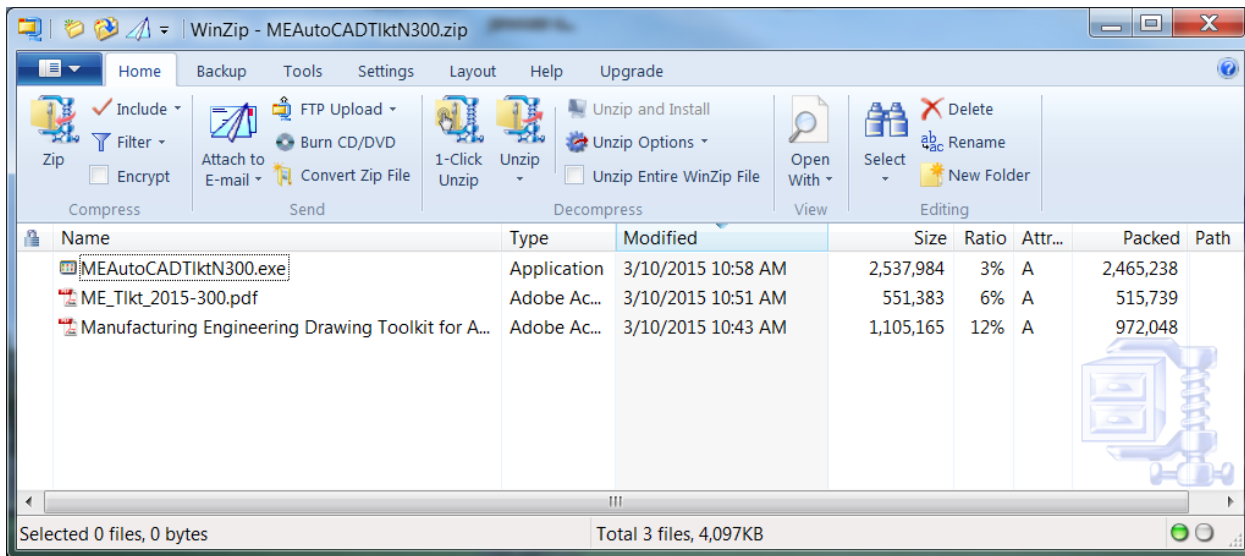
These files and their contents are property of Nexteer Automotive Corporation. No rights are granted for any purpose other than the furnishing of services and supplies to Nexteer Automotive Corporation.

STEP #1

Delete the current toolkit folder - c:\delphitk (default) if it exists.



Extract the file "MEAutoCADTlktN300.exe" from this zip file. The file is a self-extracting executable ZIP file that contains the necessary toolkit files. Execute the "MEAutoCADTlktN300.exe" file from explorer by double clicking on the file.



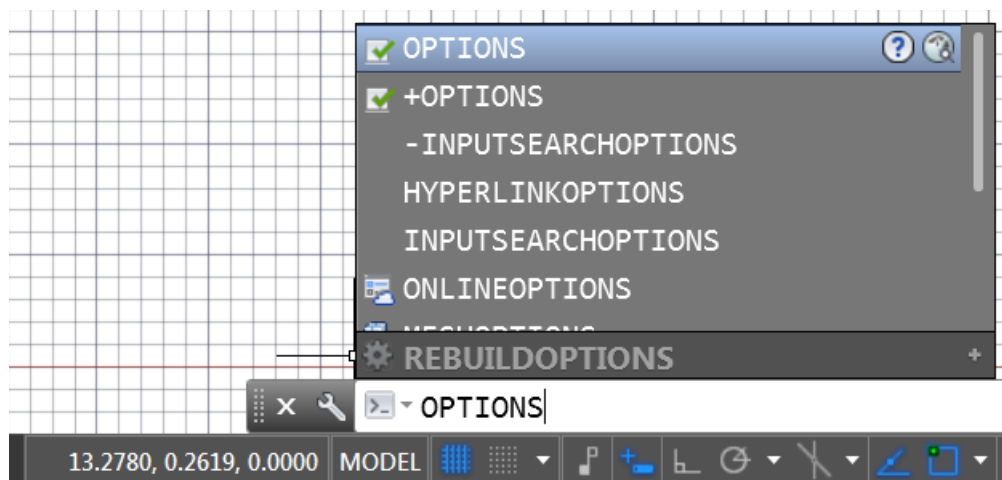
The files will be extracted to c:\MED_TK and the instructions also reflect the same path. This is the default location for installation, but you may choose to move the directory and all files to a drive or location of your choice. For example you may choose to put it on a network-shared drive to avoid multiple copies. Just remember if you choose a different location to make the corresponding changes in the location to the support file search path.

STEP #2

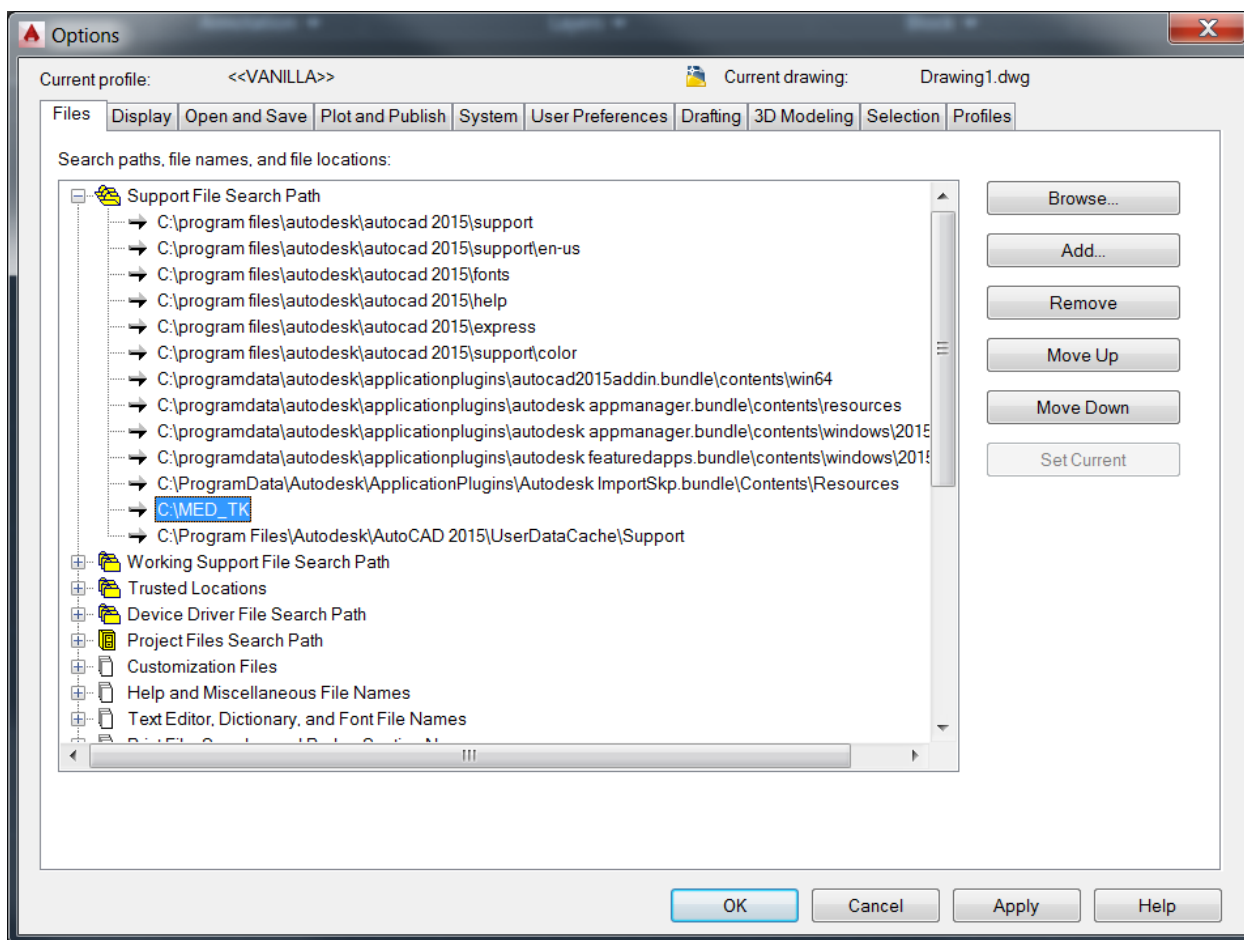
Once the files have been extracted to the hard drive, you need to add the location of the toolkit for proper use.

Run AutoCAD 2015.

At the command prompt, type "options" <return> or select Tools from the AutoCAD menus and Options... in the dropdown list .



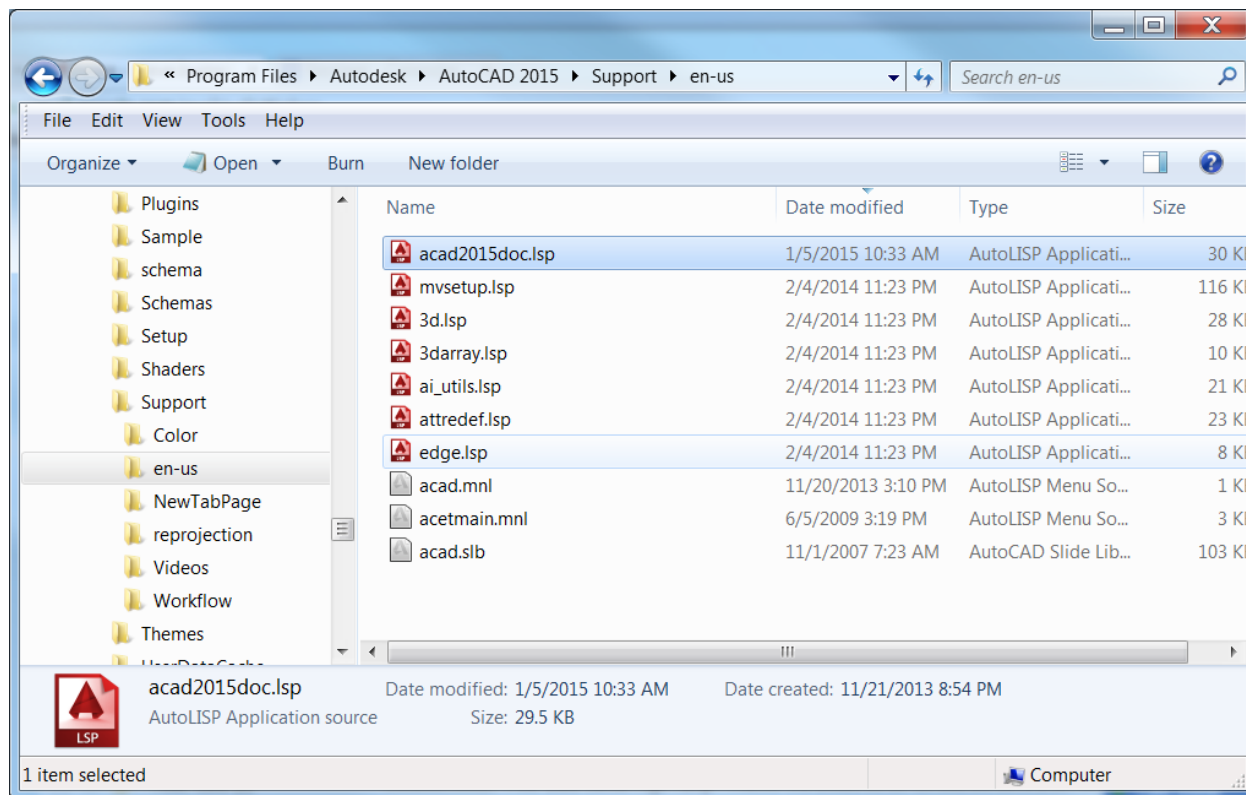
The Options pop-up box appears as shown on the following page.



Select the "Files" Tab.
 Select the "Support File Search Path".
 Select the "add" button.
 Then type c:\MED_TK <return>.
 Select the "OK" button.
 Exit AutoCAD 2015.

STEP #3

The main lisp file is loaded from the acad2015doc.lsp



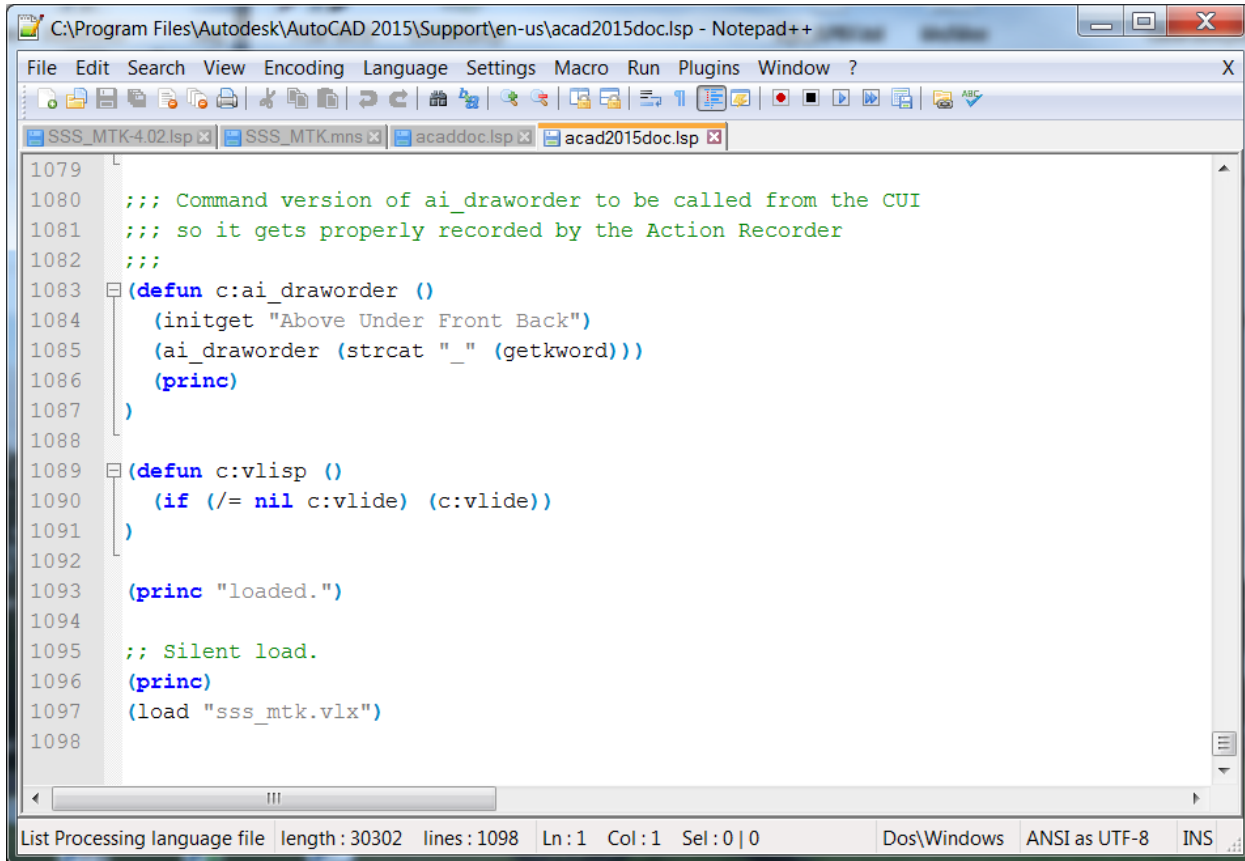
After adding the program path in AutoCAD, edit (Notepad editor) the acad2015doc.lsp to include the main lisp "SSS_MTK.VLX".

Just add the following lines...

```
(princ)
(load "sss_mtk.vlx")
```

Then save the file.

Note: If the Delphi ME Toolkit had been installed previously on the PC be sure to remove the **(load "das_mtk2002.vlx")** or **(load "das_mtk.vlx")** text from the file.



```
1079
1080 ;; Command version of ai_draworder to be called from the CUI
1081 ;; so it gets properly recorded by the Action Recorder
1082 ;;
1083 (defun c:ai_draworder ()
1084   (initget "Above Under Front Back")
1085   (ai_draworder (strcat "_" (getkeyword)))
1086   (princ)
1087 )
1088
1089 (defun c:vlisp ()
1090   (if (/= nil c:vlide) (c:vlide))
1091 )
1092
1093 (princ "loaded.")
1094
1095 ;; Silent load.
1096 (princ)
1097 (load "sss_mtk.vlx")
1098
```

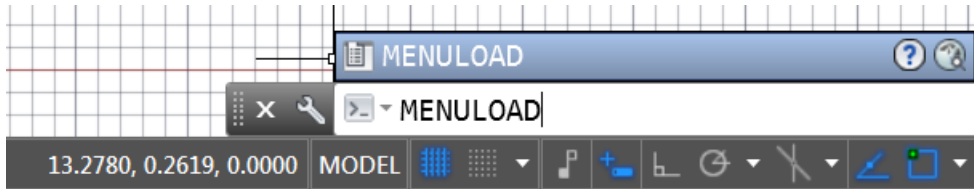
List Processing language file length: 30302 lines: 1098 Ln: 1 Col: 1 Sel: 0 | 0 Dos\Windows ANSI as UTF-8 INS

STEP #4

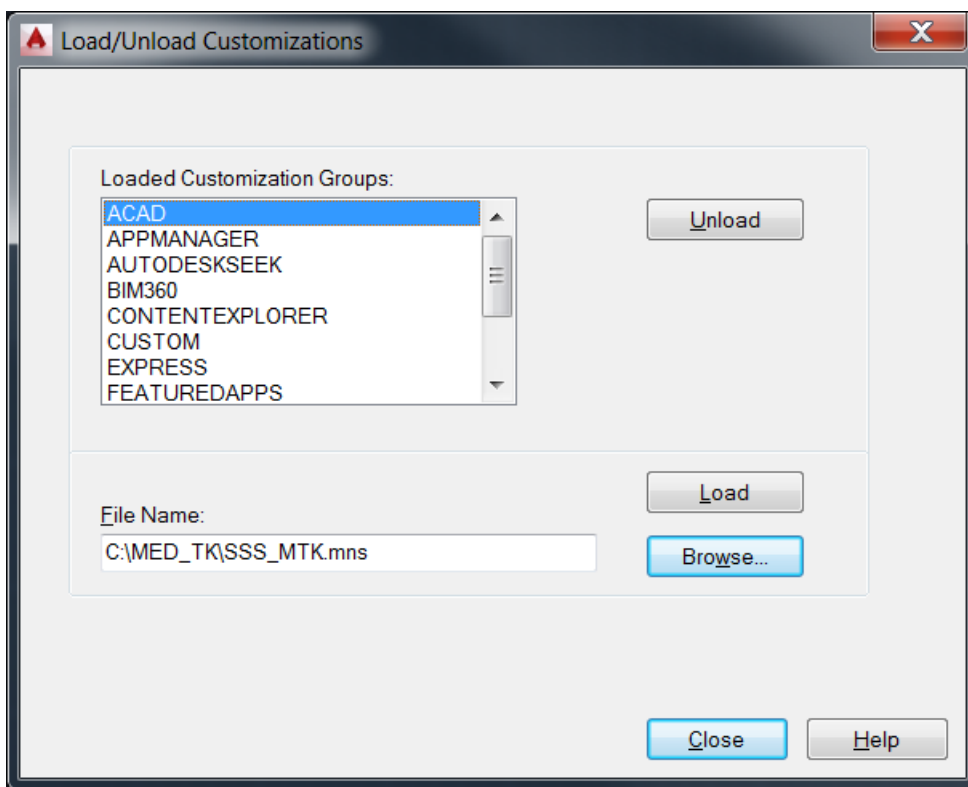
This step is for loading the provided menu file.

Run AutoCAD 2015.

At the command prompt, type "menuload" <return>.

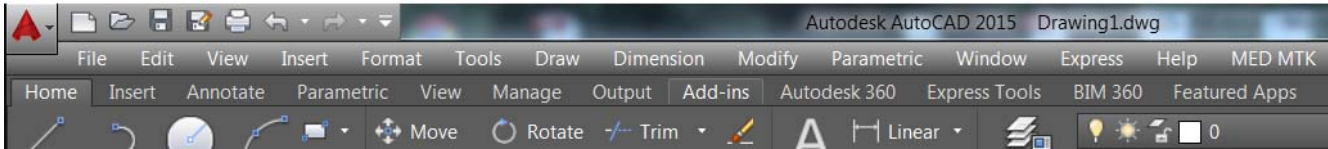


The following customization window appears:

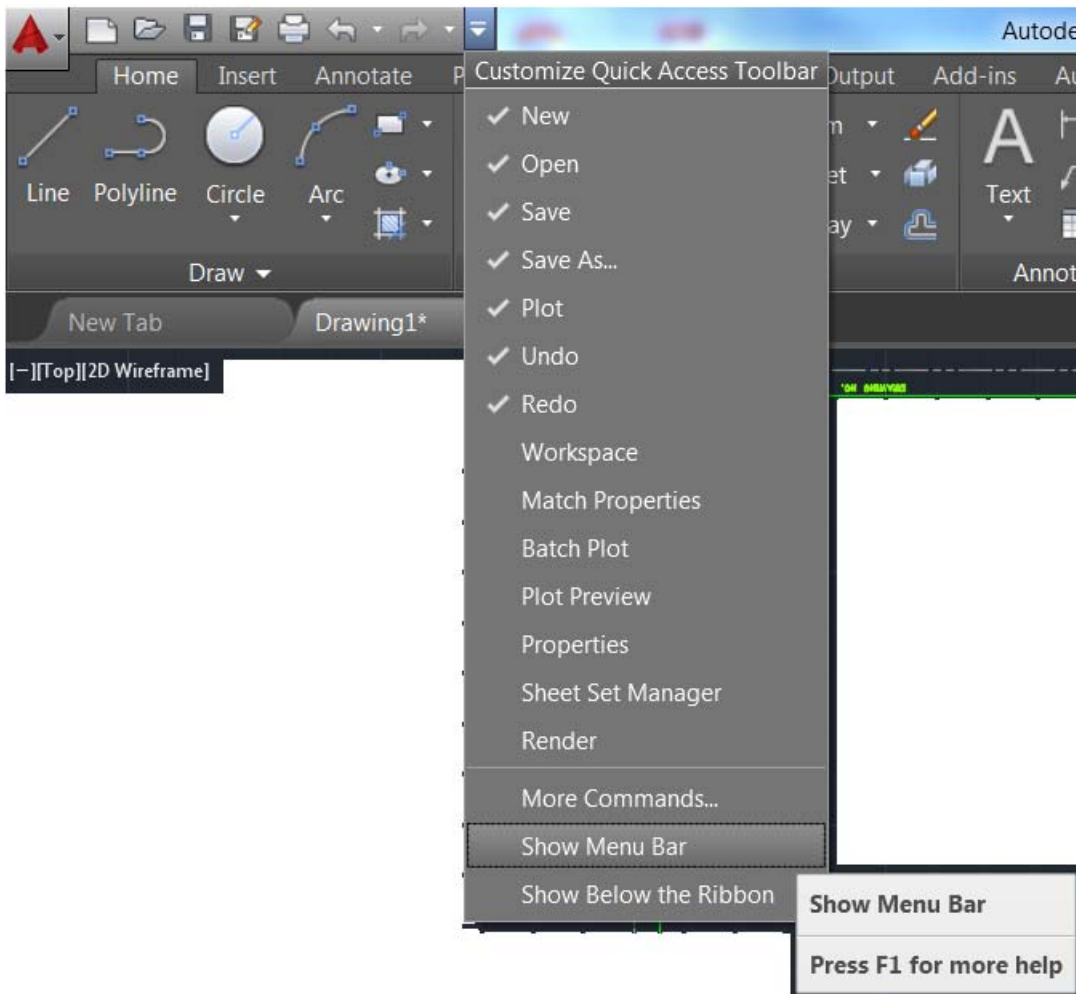


In the "Filename" box, type c:\MED_TK\sss_mtk.mns.
Select the "Load" button.

The MED MTK should appear in your menu bar at the top of the AutoCAD screen.



If the menu bar is not displayed on the user interface click on the drop down at the right end of the "Customize Quick Access Toolbar" at the top left-hand corner of the screen and select "Show Menu Bar".



You have now completed the installation and you are ready to use the program(s).

All programs and blocks can be accessed through the provided menu, below are lists of the file names.

Here is a list of the program command names.
Don't forget you may assign them aliases "HOT KEYS".

Command	Description
titleblk	Inserts/Changes title blocks.
restoretb	Restores previous title block if needed.
chprosym	Changes Projection symbol.
daseng	Sets variables for English drawings.
dasmtr	Sets variables for Metric drawings.
daslyr	Loads ME Toolkit standard layers, colors, linetypes.
chsecln	Changes properties of selected section line(s).
chxhatch	Changes properties of selected crosshatching.
chtobylr	Changes properties of selections to bylayer.
chcsecln	Changes properties of selected center section line.
abouttk	Displays current version of Toolkit.
edittblk	Edit title block information.
editrblk	Edit revision block information.
editbrdr	Edit vendor name and border information.
updateborder	Updates border and frame text from main title block.
imandwname	File naming assistance for IMAN.

Here is a list of drawing files included.

DWG name	Description
CAPSPART	Caps Part note (process sheets only)
CHEMCOAT_IN	English chemical coating note
CHEMCOAT_MM	Metric chemical coating note
COMP_TB_IN	English comparator chart detail block
COMP_TB_MM	Metric comparator chart detail block
CONCENT_IN	Concentric note "English"
CONCENT_MM	Concentric note "Metric"
SSS_B	English 11x17 border
SSS_C	English C-size border
SSS_D	English D-size border
SSS_E	English E-size border
SSS_R72	English 72" LG. border
SSS_R96	English 96" LG. border
SSS_R120	English 120" LG. border
SSS_A3	Metric A3-size border
SSS_A2	Metric A2-size border
SSS_A1	Metric A1-size border
SSS_A0	Metric A0-size border
SSS_MR	Metric MR roll border
SSS_MRE	Metric MRE roll border
SSS_MRF	Metric MRF roll border
SSS_LIST	Parts List border
SSS_PROC	Process sheet border
SSS_INST	Gage Instruction sheet
DETUSED_IN	English detail used note
DETUSED_MM	Metric detail used note
FINISH_IN	English finish mark
FINISH_MM	Metric finish mark
METRICDWG	Metric drawing note
METRICGAGE	Metric gage note

MICROFIN_IN --- English micro finish symbol
 MICROFIN_MM --- Metric micro finish symbol
 PARALLEL_IN --- Parallel note "English"
 PARALLEL_MM --- Parallel note "Metric"
 PLSTKTXT ----- Text for parts list stock line
 PRO3RDANG ----- 3rd angle projection symbol
 PROEUROPE ----- 1st angle projection symbol
 REVTRI_IN ----- Triangle revision symbol "English"
 REVTRI_MM ----- Triangle revision symbol "Metric"
 REVCIR_IN ----- Circular revision symbol "English"
 REVCIR_MM ----- Circular revision symbol "Metric"
 SQUARE_IN ----- Square note "English"
 SQUARE_MM ----- Square note "Metric"

Example Pen Configuration Paramaters - PCP File

```

-----
HPGL2 Plotters:
    SSSEngPlots.pcp --- English Settings
    SSSMetPlots.pcp --- Metric Settings

HPGL2 & PCL5 Printers:
    SSSPrint.pcp ----- Scaled to fit, all thin widths
    SSSProcSht.pcp ---- Process sheet widths
  
```

These files are loaded from the "Plot" "Device and Default Selection..."
 Configuration File "Merge..." (PCP - R12/R13)

Files contained in this toolkit:

53 Files

Capspart.dwg
ChemCoat_in.dwg
ChemCoat_mm.dwg
Comp_tb_in.dwg
Comp_tb_mm.dwg
Concent_in.dwg
Concent_mm.dwg
DASLib.slb
Detused_in.dwg
Detused_mm.dwg
EXCELPL.txt
Finish_in.dwg
Finish_mm.dwg
Manufacturing Engineering Drawing Toolkit for AutoCAD2012-200.pdf
MetricDwg.dwg
MetricGage.dwg
ME_Tlkt_2012-200.pdf
Microfin_in.dwg
Microfin_mm.dwg
Parallel_in.dwg
Parallel_mm.dwg
Plstktxt.dwg
Pro3rdAng.dwg
ProEurope.dwg
RevCir_in.dwg
RevCir_mm.dwg
RevTri_in.dwg
RevTri_mm.dwg
Square_in.dwg
Square_mm.dwg
SSSEngPlots.pcp
SSSMetPlots.pcp
SSSPrint.pcp
SSSProcSht.pcp
sss_a0.dwg
sss_a1.dwg
sss_a2.dwg
sss_a3.dwg
sss_b.dwg
sss_c.dwg
sss_d.dwg
sss_e.dwg
sss_inst.dwg
sss_list.dwg
sss_mr.dwg
sss_mre.dwg
sss_mrf.dwg
SSS_MTK.mns
sss_mtk.VLX
sss_proc.dwg
sss_r120.dwg
sss_r72.dwg
sss_r96.dwg